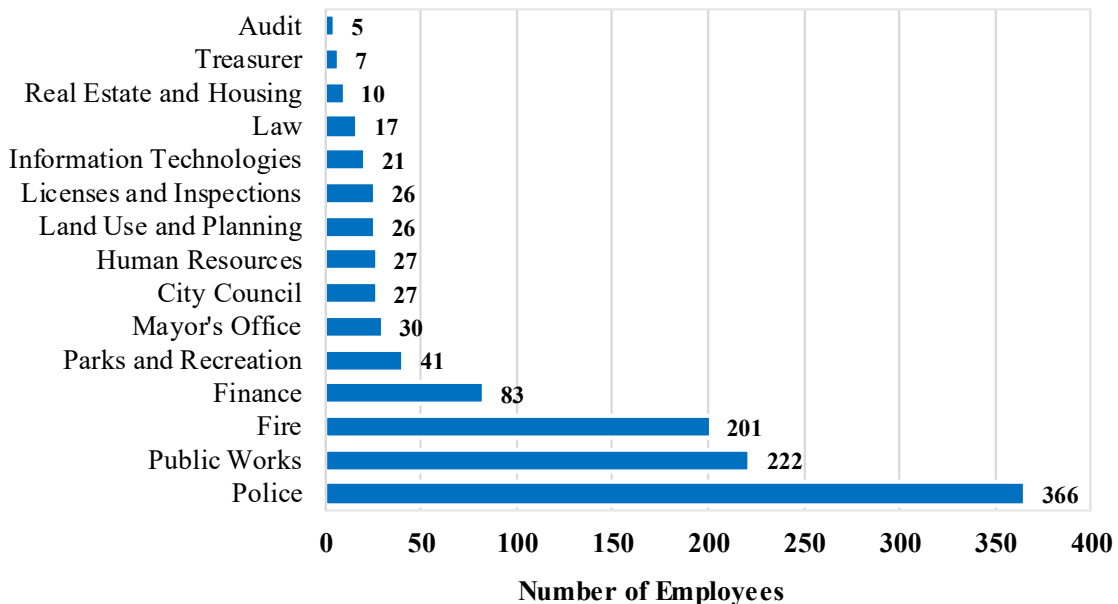


## Summary of Staffing Levels Fiscal Year 2025

### Total Number of Employees – All Funds

Department	Budget FY 2021	Budget FY 2022	Budget FY 2023	Budget FY 2024	Budget FY 2025	Net Change FY'25-'24
Mayor's Office	34.00	34.00	30.00	30.00	30.00	0.00
City Council	28.00	27.00	27.00	27.00	27.00	0.00
Treasurer	7.00	7.00	7.00	7.00	7.00	0.00
Land Use and Planning	10.00	9.00	26.00	26.00	26.00	0.00
Audit	5.00	5.00	5.00	5.00	5.00	0.00
Law	17.00	17.00	17.00	17.00	17.00	0.00
Finance	84.00	84.00	81.00	84.00	83.00	(1.00)
Human Resources	26.00	26.00	26.00	26.00	27.00	1.00
Licenses and Inspections	42.00	42.00	26.00	26.00	26.00	0.00
Parks and Recreation	41.00	40.00	40.00	41.00	41.00	0.00
Fire	161.00	160.00	160.00	160.00	201.00	41.00
Police	379.00	380.00	373.00	374.00	366.00	(8.00)
Public Works	225.00	225.00	224.00	225.00	222.00	(3.00)
Real Estate and Housing	11.00	11.00	10.00	10.00	10.00	0.00
Information Technologies	21.00	21.00	21.00	21.00	21.00	0.00
<b>Total</b>	<b>1,091.00</b>	<b>1,088.00</b>	<b>1,073.00</b>	<b>1,079.00</b>	<b>1,109.00</b>	<b>30.00</b>
<b>Total Employees per 1,000 City Residents</b>	<b>15.40</b>	<b>15.36</b>	<b>15.13</b>	<b>15.22</b>	<b>15.50</b>	<b>0.28</b>

### Total Number of Employees by Department FY 2025 (All Funds)



Just over 73% (or 815) of the City's employees work to provide Public Safety (Police, Fire, L&I) and Public Works services.

## Summary of Staffing Levels Fiscal Year 2025

### Total Number of Employees - General Fund

<b>Department</b>	<b>Budget FY 2021</b>	<b>Budget FY 2022</b>	<b>Budget FY 2023</b>	<b>Budget FY 2024</b>	<b>Budget FY 2025</b>	<b>Net Change FY'25-'24</b>
Mayor's Office	33.50	33.50	29.50	29.50	29.50	0.00
City Council	19.25	19.65	19.65	19.65	19.65	0.00
Treasurer	3.00	3.00	3.00	3.00	3.00	0.00
Land Use and Planning	9.55	8.55	25.55	26.00	26.00	0.00
Audit	5.00	5.00	5.00	5.00	5.00	0.00
Law	17.00	17.00	17.00	17.00	17.00	0.00
Finance	58.85	58.05	55.40	56.60	54.80	(1.80)
Human Resources	16.60	16.60	16.60	16.60	17.10	0.50
Licenses and Inspections	42.00	42.00	26.00	26.00	26.00	0.00
Parks and Recreation	40.60	39.60	39.60	40.60	39.60	(1.00)
Fire	161.00	160.00	160.00	160.00	201.00	41.00
Police	373.57	374.57	365.00	366.00	358.00	(8.00)
Public Works	120.05	120.05	120.05	120.05	117.55	(2.50)
Real Estate and Housing	2.75	2.88	2.38	2.15	2.20	0.05
Information Technologies	21.00	21.00	21.00	21.00	21.00	0.00
<b>Total</b>	<b>923.72</b>	<b>921.45</b>	<b>905.73</b>	<b>909.15</b>	<b>937.40</b>	<b>28.25</b>

### Total Number of Employees – Water / Sewer Fund

<b>Department</b>	<b>Budget FY 2021</b>	<b>Budget FY 2022</b>	<b>Budget FY 2023</b>	<b>Budget FY 2024</b>	<b>Budget FY 2025</b>	<b>Net Change FY'25-'24</b>
Finance	25.15	25.95	25.60	27.40	28.20	0.80
Public Works	104.95	104.95	103.95	104.95	104.45	(0.50)
<b>Total</b>	<b>130.10</b>	<b>130.90</b>	<b>129.55</b>	<b>132.35</b>	<b>132.65</b>	<b>0.30</b>

### Total Number of Employees – Special Funds

<b>Department</b>	<b>Budget FY 2021</b>	<b>Budget FY 2022</b>	<b>Budget FY 2023</b>	<b>Budget FY 2024</b>	<b>Budget FY 2025</b>	<b>Net Change FY'25-'24</b>
Mayor's Office	0.50	0.50	0.50	0.50	0.50	0.00
City Council	8.75	7.35	7.35	7.35	7.35	0.00
Treasurer	4.00	4.00	4.00	4.00	4.00	0.00
Land Use and Planning	0.45	0.45	0.45	0.00	0.00	0.00
Parks and Recreation	0.40	0.40	0.40	0.40	1.40	1.00
Police	5.43	5.43	8.00	8.00	8.00	0.00
Real Estate and Housing	8.25	8.12	7.62	7.85	7.80	(0.05)
<b>Total</b>	<b>27.78</b>	<b>26.25</b>	<b>28.32</b>	<b>28.10</b>	<b>29.05</b>	<b>0.95</b>

**Summary of Staffing Levels  
Fiscal Year 2025**

**Total Number of Employees – Internal Service Funds**

<b>Department</b>	<b>Budget FY 2021</b>	<b>Budget FY 2022</b>	<b>Budget FY 2023</b>	<b>Budget FY 2024</b>	<b>Budget FY 2025</b>	<b>Net Change FY'25-'24</b>
Human Resources	9.40	9.40	9.40	9.40	9.90	0.50
<b>Total</b>	<b>9.40</b>	<b>9.40</b>	<b>9.40</b>	<b>9.40</b>	<b>9.90</b>	<b>0.50</b>